



VIVID AT

# BRAMLEY PARK

WARSASH, HAMPSHIRE

# HOW IT WORKS

Helping you find your perfect place...

**1** Apply online for the Bramley Park development by following the link: [yourvividhome.co.uk/developments/bramley-park](https://yourvividhome.co.uk/developments/bramley-park)

**2** Once we've received your application, we'll check you're eligible to apply for Shared Ownership. One of our Sales Officers will get in touch to let you know if you meet the priority criteria for the development, this can take a few weeks when we're busy.

**3** If we're able to progress your application, we'll signpost you to one of our panel financial advisors\* to talk about your affordability and the share you could purchase (even if you're a potential cash buyer). If you choose to use them of your own financial advisor, they'll send us your completed financial assessment and some more documents like proof of your deposit and mortgage AIP (Agreement in Principle). Please note, VIVID are not a credit broker.

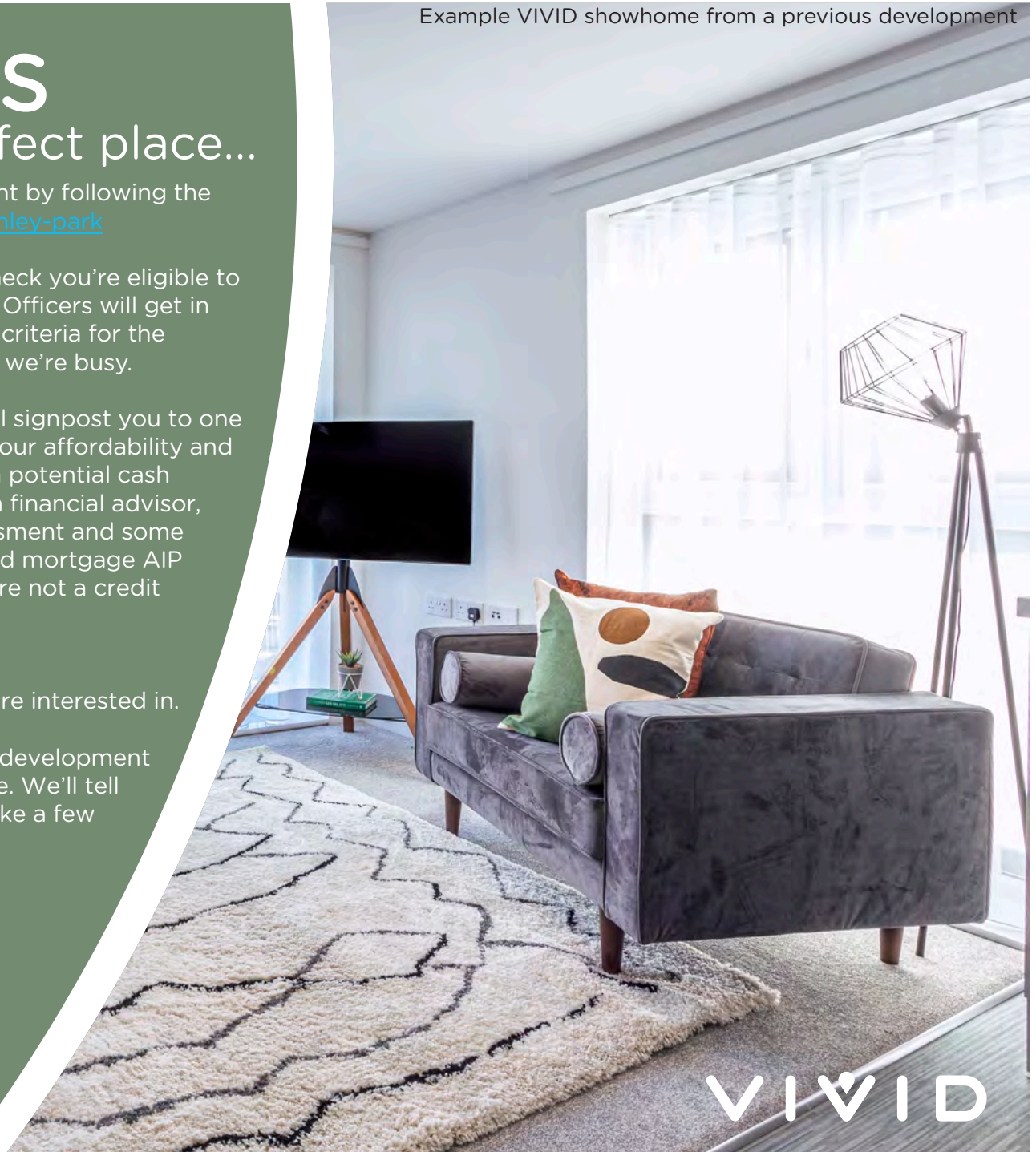
**4** We'll also ask you to email us which plots you're interested in.

**5** We'll review all the documents and check the development criteria to see if we're able to offer you a home. We'll tell you as soon as we can, sometimes this may take a few weeks whilst we complete this process

\*There are many financial advisors you could use to understand and apply for a Shared Ownership mortgage on your behalf. Every financial advisor has a duty to find you the mortgage that's best for you. They'll keep in mind VIVID's timescales for any mortgage that is offered to you, as it needs to meet our sales timeframe. We're signposting you to our panel Financial Advisors as they are experts in Shared Ownership and know the VIVID process too. They'll complete your affordability checks free of charge. If you're offered a home and apply for a mortgage with them there will be a £250 fee, please check with your panel financial advisor when this will be payable. If you choose to use another Financial Advisor that's absolutely fine, and your choice won't impact any VIVID decision on whether you buy a home from us.

Please note; VIVID is not a credit broker.

Example VIVID showhome from a previous development



VIVID



# TRUST VIVID

Always got a prompt response to my emails. I was kept informed throughout the process. Lovely staff.

Kara - Shared Owner

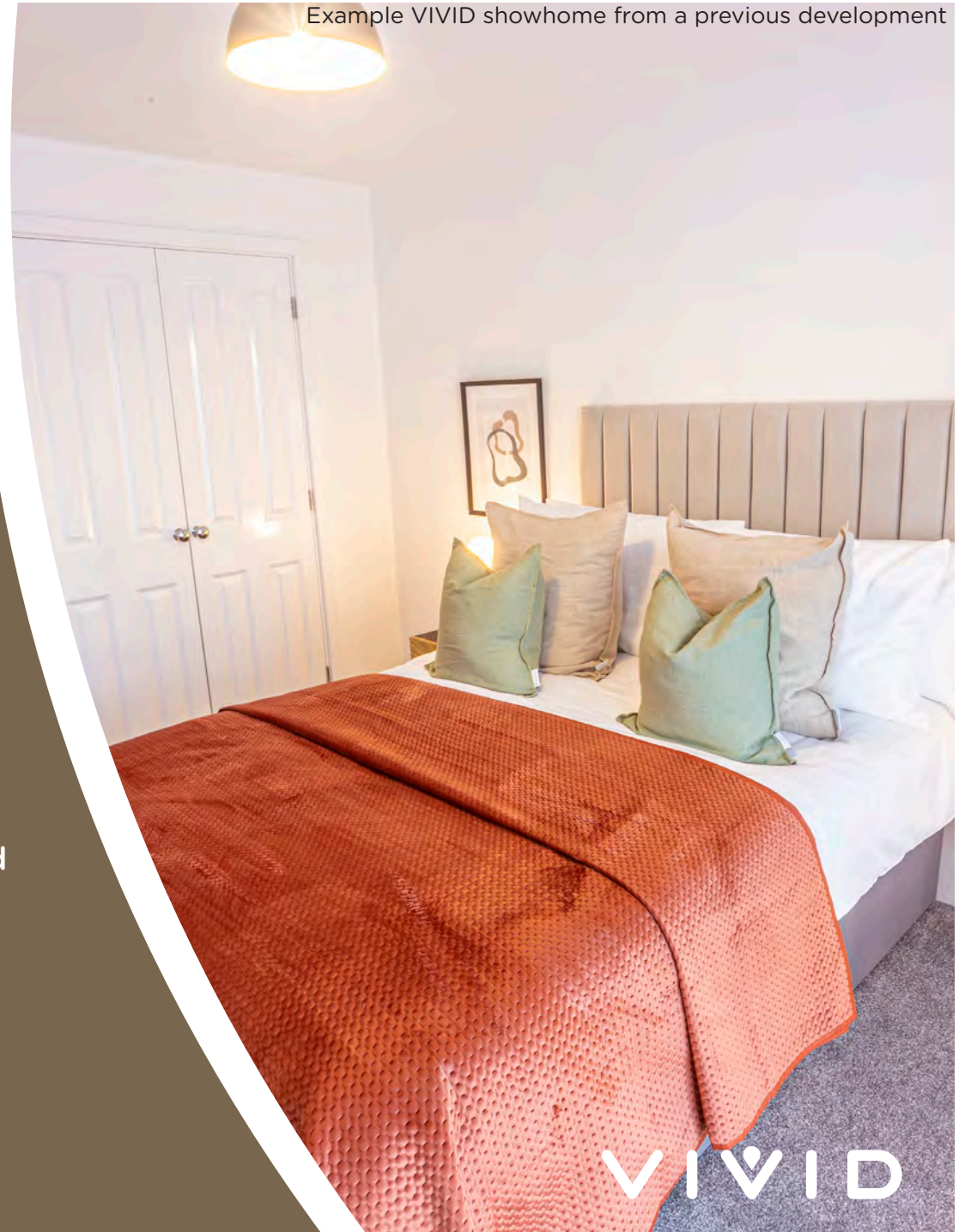
The service from start to finish was amazing. Fantastic communication, things happened when they said they would and the whole process was so easy.

Nicola - Shared Owner

VIVID have been outstanding from the very beginning of my application - they professionally supported me through the whole process explained every step and made me feel part of the VIVID family, I can't stress how amazing all the VIVID team have been - thank you.

Susan - Shared Owner

Example VIVID showhome from a previous development



# THE DEVELOPMENT

**Bramley Park is a new development of 2 bedroom apartmernts**

Located west of Locks Heath and south-west of Junction 9 of the M27, Bramley Park can be found between Locks Heath and Warsash. Ideally positioned close to local shopping centres such as Locks Heath District Centre which includes a Waitrose store or Warsash Village for everyday essentials.

With a bus service on your doorstep or the train station at Swanwick, getting around is easy. Make the most of the outdoors with a stroll through the peaceful Holly Hill Woodland Park and along the estuary of the River Hamble.





# THE LOCATION

If you live in this part of the South Coast you're spoiled for choice

Sarisbury Green village boasts a traditional cricket green overlooked by a church and village hall. Just five minutes away is the River Hamble with its nearby marinas, making this picturesque area a very popular yachting location. The area offers a wealth of natural beauty with pleasant walks to be enjoyed along The Solent and around Holly Hill Woodland Park and Manor Farm Country Park.

Nearby Warsash is a pretty maritime village located in the south of Hampshire. Situated at the mouth of the River Hamble. This location is ideal if you enjoy sailing, being on the water or enjoy a stroll along the banks of the river. The village is very friendly and there are plenty of options for socialising with several pubs, bars and restaurants nearby.



VIVID

# Bramley Park

## Plot 9 2 BEDROOM APARTMENT

### SECOND FLOOR

Kitchen / Dining Room / Lounge	5.05m x 4.95m (16'-7" x 16'-3")
Bedroom 1	4.28m x 2.95m (14'-1" x 9'-8")
Bedroom 2	3.28m x 3.03m (10'-9" x 9'-11")



### SECOND FLOOR

Please note floorplans are not to scale and are indicative only, total areas are provided as gross internal areas and are subject to variance and these plans do not act as part of a legally binding contract, warranty or guarantee. These plans may not be to scale and dimensions may vary during the build programme. It is common for fixtures and fittings to change during the build programme, for example boilers. Location of windows, doors, kitchen units and appliances may differ. Doors may swing in to the opposite direction to that shown on selected houses. Dimensions, which are taken from the indicated points of measurement are for guidance only and are not intended to be used to calculate the space needed for specific pieces of furniture. If your home is set within a terrace row, the position of the windows may vary from those shown on this plan. The property may also be a handed (mirrored) version of the layout shown here. We advise that you do not order any furniture based on these indicative plans, please wait until you can measure up fully inside the property. Please speak to a member of our sales team about when you can gain access to take measurements. We will not be responsible for costs incurred due to ordering incorrect furniture. VIVID Housing Limited is registered in England and Wales as a registered society under the Co-operative and Community Benefit Societies Act 2014 under number 7544 with exempt charity status and as a registered provider of social housing with the Homes and Communities Agency under number 4850. Our registered office is at Peninsular House, Wharf Road, Portsmouth, Hampshire PO2 8HB. All information correct at time of creation - April 2024.

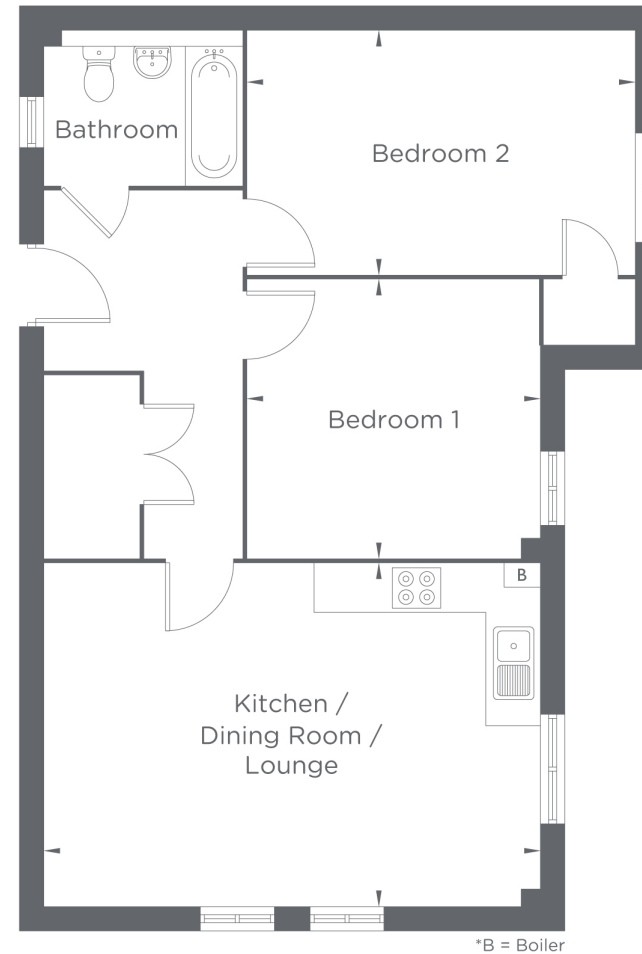
# VIVID

# Bramley Park

## Plot 10 2 BEDROOM APARTMENT

### GROUND FLOOR

Kitchen / Dining Room / Lounge	6.14m x 4.24m (20'-2" x 13'-11")
Bedroom 1	3.63m x 3.45m (11'-11" x 11'-4")
Bedroom 2	4.80m x 2.99m (15'-9" x 9'-10")



GROUND FLOOR

Please note floorplans are not to scale and are indicative only, total areas are provided as gross internal areas and are subject to variance and these plans do not act as part of a legally binding contract, warranty or guarantee. These plans may not be to scale and dimensions may vary during the build programme. It is common for fixtures and fittings to change during the build programme, for example boilers Location of windows, doors, kitchen units and appliances may differ. Doors may swing in to the opposite direction to that shown on selected houses. Dimensions, which are taken from the indicated points of measurement are for guidance only and are not intended to be used to calculate the space needed for specific pieces of furniture. If your home is set within a terrace row, the position of the windows may vary from those shown on this plan. The property may also be a handed (mirrored) version of the layout shown here. We advise that you do not order any furniture based on these indicative plans, please wait until you can measure up fully, inside the property. Please speak to a member of our sales team about when you can gain access to take measurements. We will not be responsible for costs incurred due to ordering incorrect furniture. VIVID Housing Limited is registered in England and Wales as a registered society under the Co-operative and Community Benefit Societies Act 2014 under number 7544 with exempt charity status and as a registered provider of social housing with the Homes and Communities Agency under number 4850. Our registered office is at Peninsular House, Wharf Road, Portsmouth, Hampshire, PO2 8HB. All information correct at time of creation - April 2024.

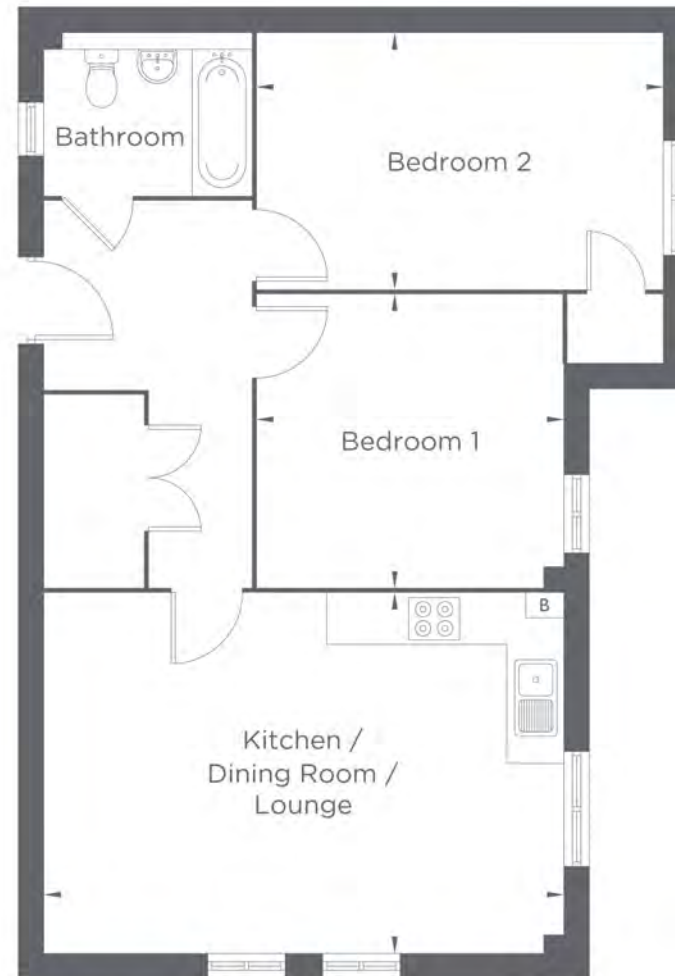
VIVID

# Bramley Park

## Plot 11 2 BEDROOM APARTMENT

### FIRST FLOOR

Kitchen / Dining Room / Lounge	6.14m x 4.24m (20'-2" x 13'-11")
Bedroom 1	3.63m x 3.45m (11'-11" x 11'-4")
Bedroom 2	4.80m x 2.99m (15'-9" x 9'-10")



FIRST FLOOR

\*B = Boiler

Please note floorplans are not to scale and are indicative only, total areas are provided as gross internal areas and are subject to variance and these plans do not act as part of a legally binding contract, warranty or guarantee. These plans may not be to scale and dimensions may vary during the build programme. It is common for fixtures and fittings to change during the build programme, for example boilers. Location of windows, doors, kitchen units and appliances may differ. Doors may swing in to the opposite direction to that shown on selected houses. Dimensions, which are taken from the indicated points of measurement are for guidance only and are not intended to be used to calculate the space needed for specific pieces of furniture. If your home is set within a terrace row, the position of the windows may vary from those shown on this plan. The property may also be a handed (mirrored) version of the layout shown here. We advise that you do not order any furniture based on these indicative plans, please wait until you can measure up fully inside the property. Please speak to a member of our sales team about when you can gain access to take measurements. We will not be responsible for costs incurred due to ordering incorrect furniture. VIVID Housing Limited is registered in England and Wales as a registered society under the Co-operative and Community Benefit Societies Act 2014 under number 7544 with exempt charity status and as a registered provider of social housing with the Homes and Communities Agency under number 4850. Our registered office is at Peninsular House, Wharf Road, Portsmouth, Hampshire PO2 8HB. All information correct at time of creation - April 2024.

VIVID

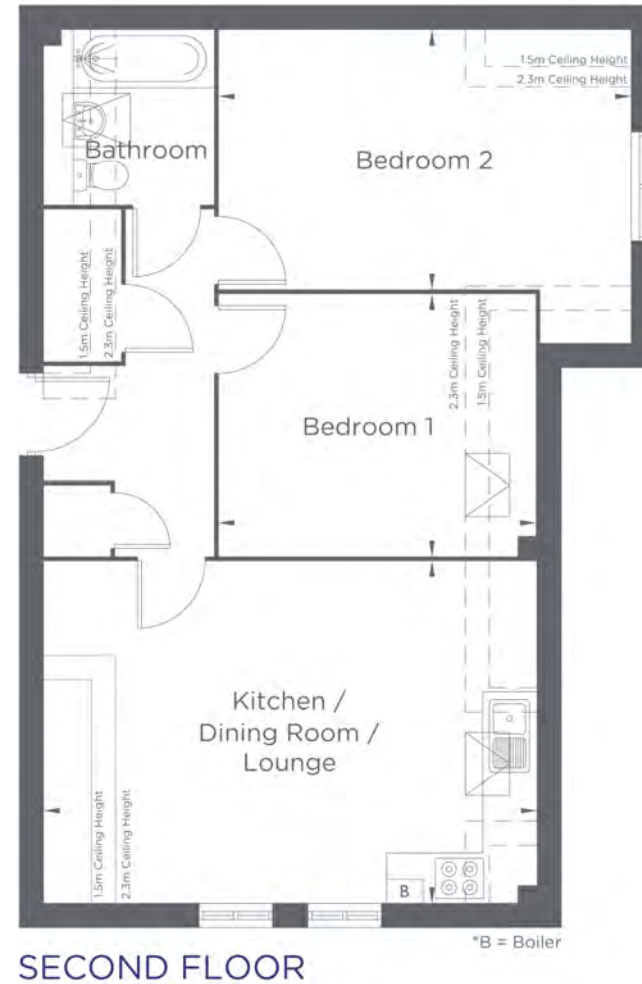


# Bramley Park

## Plot 12 2 BEDROOM APARTMENT

### SECOND FLOOR

Kitchen / Dining Room / Lounge	6.14m x 4.24m (20'-2" x 13'-11")
Bedroom 1	3.96m x 3.25m (13'-0" x 10'-8")
Bedroom 2	5.14m x 3.19m (16'-10" x 10'-6")

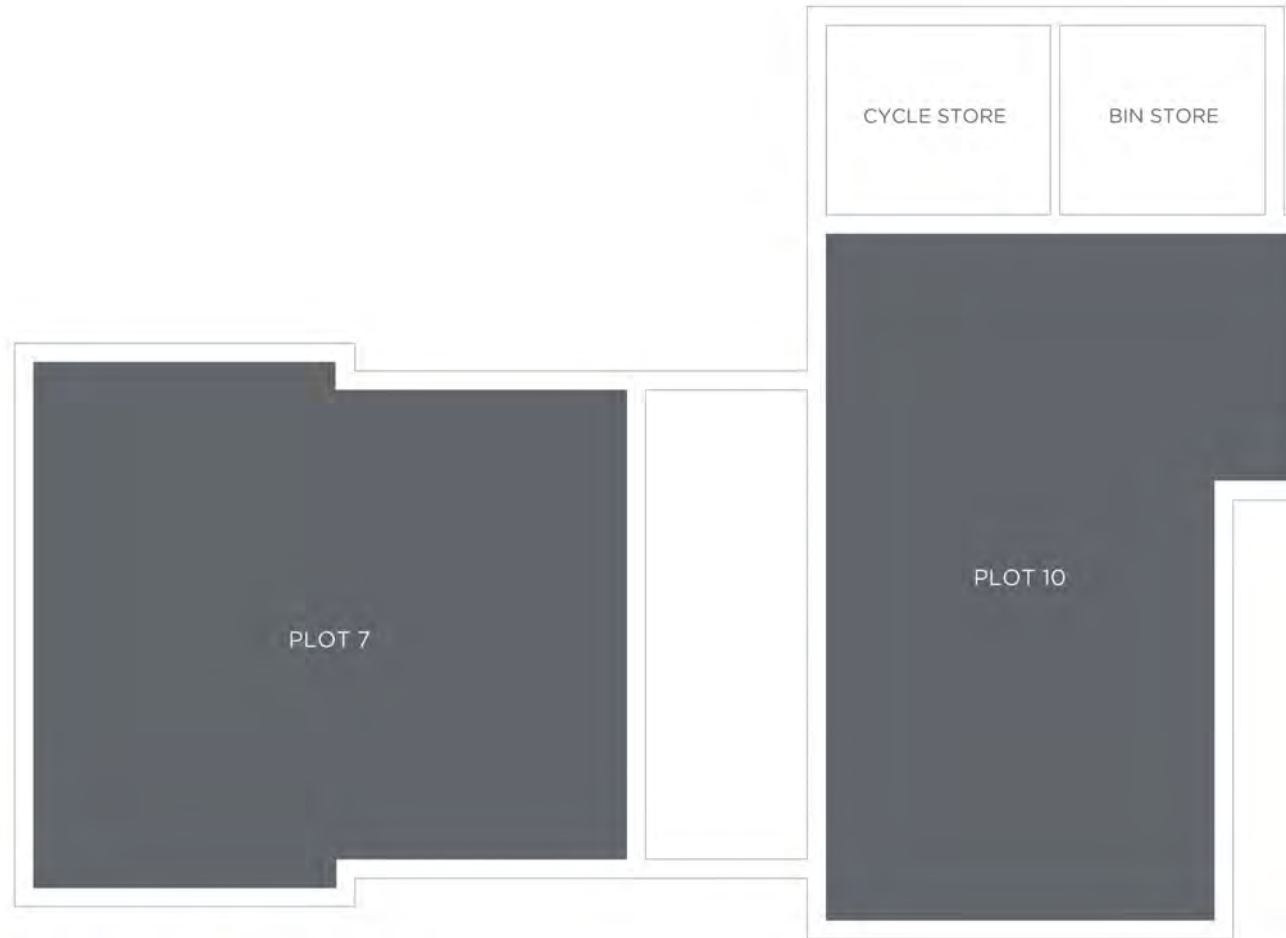


Please note floorplans are not to scale and are indicative only, total areas are provided as gross internal areas and are subject to variance and these plans do not act as part of a legally binding contract, warranty or guarantee. These plans may not be to scale and dimensions may vary during the build programme. It is common for fixtures and fittings to change during the build programme, for example boilers. Location of windows, doors, kitchen units and appliances may differ. Doors may swing in to the opposite direction to that shown on selected houses. Dimensions, which are taken from the indicated points of measurement are for guidance only and are not intended to be used to calculate the space needed for specific pieces of furniture. If your home is set within a terrace row, the position of the windows may vary from those shown on this plan. The property may also be a handed (mirrored) version of the layout shown here. We advise that you do not order any furniture based on these indicative plans, please wait until you can measure up fully inside the property. Please speak to a member of our sales team about when you can gain access to take measurements. We will not be responsible for costs incurred due to ordering incorrect furniture. VIVID Housing Limited is registered in England and Wales as a registered society under the Co-operative and Community Benefit Societies Act 2014 under number 7544 with exempt charity status and as a registered provider of social housing with the Homes and Communities Agency under number 4850. Our registered office is at Peninsular House, Wharf Road, Portsmouth, Hampshire PO2 8HB. All information correct at time of creation - April 2024.

# VIVID

# Bramley Park

Plots 7 & 10



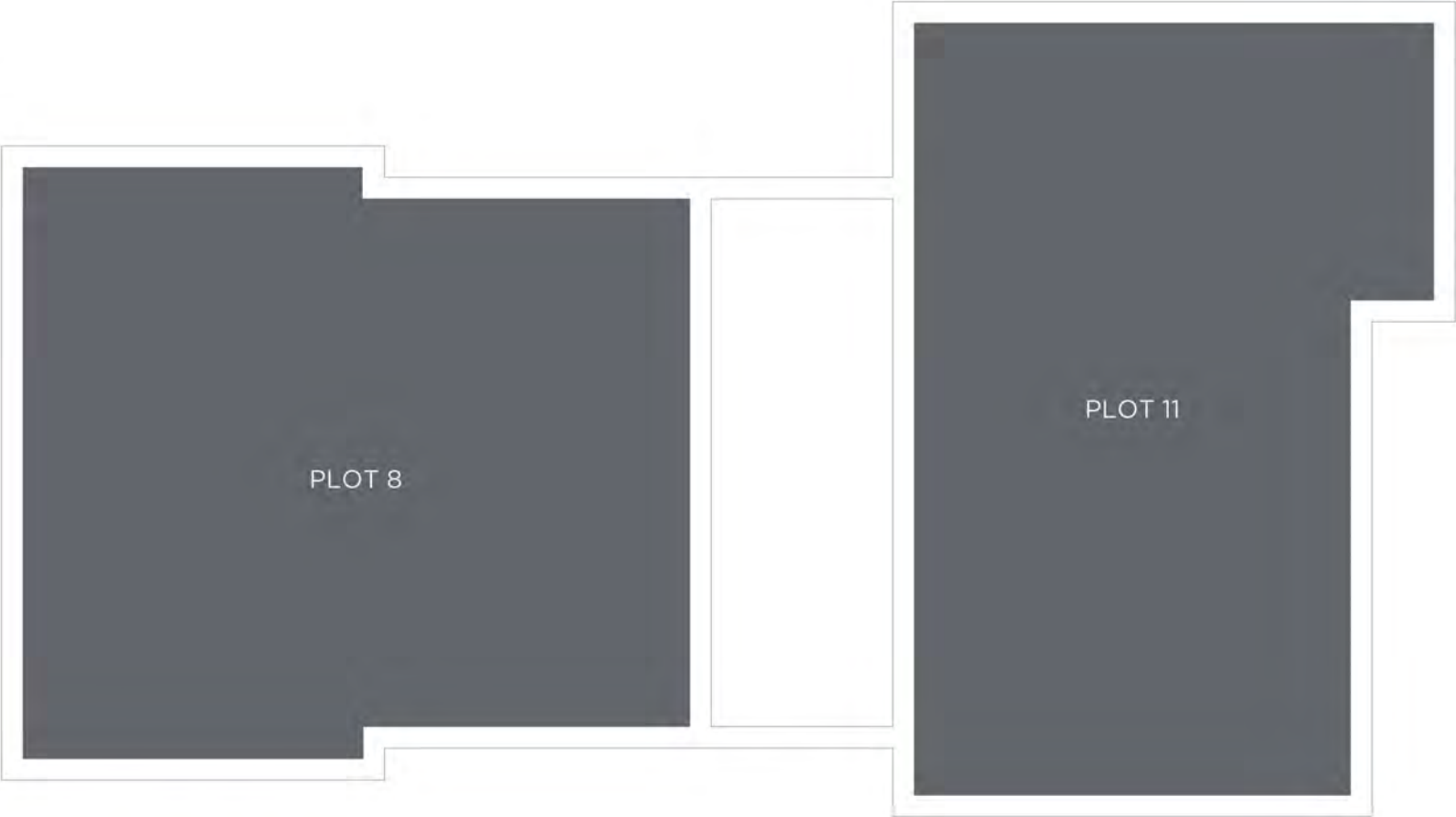
## GROUND FLOOR

Please note floorplans are not to scale and are indicative only, total areas are provided as gross internal areas and are subject to variance and these plans do not act as part of a legally binding contract, warranty or guarantee. These plans may not be to scale and dimensions may vary during the build programme, it is common for fixtures and fittings to change during the build programme, for example boilers. Location of windows, doors, kitchen units and appliances may differ. Doors may swing in to the opposite direction to that shown on selected houses. Dimensions, which are taken from the indicated points of measurement are for guidance only and are not intended to be used to calculate the space needed for specific pieces of furniture. If your home is set within a terrace row, the position of the windows may vary from those shown on this plan. The property may also be a handed (mirrored) version of the layout shown here. We advise that you do not order any furniture based on these indicative plans, please wait until you can measure up fully, inside the property. Please speak to a member of our sales team about when you can gain access to take measurements. We will not be responsible for costs incurred due to ordering incorrect furniture. VIVID Housing Limited is registered in England and Wales as a registered society under the Co-operative and Community Benefit Societies Act 2014 under number 7544 with exempt charity status and as a registered provider of social housing with the Homes and Communities Agency under number 4850. Our registered office is at Peninsular House, Wharf Road, Portsmouth, Hampshire, PO2 8HB. All information correct at time of creation - April 2024.

VIVID

# Bramley Park

Plots 8 & 11



## FIRST FLOOR

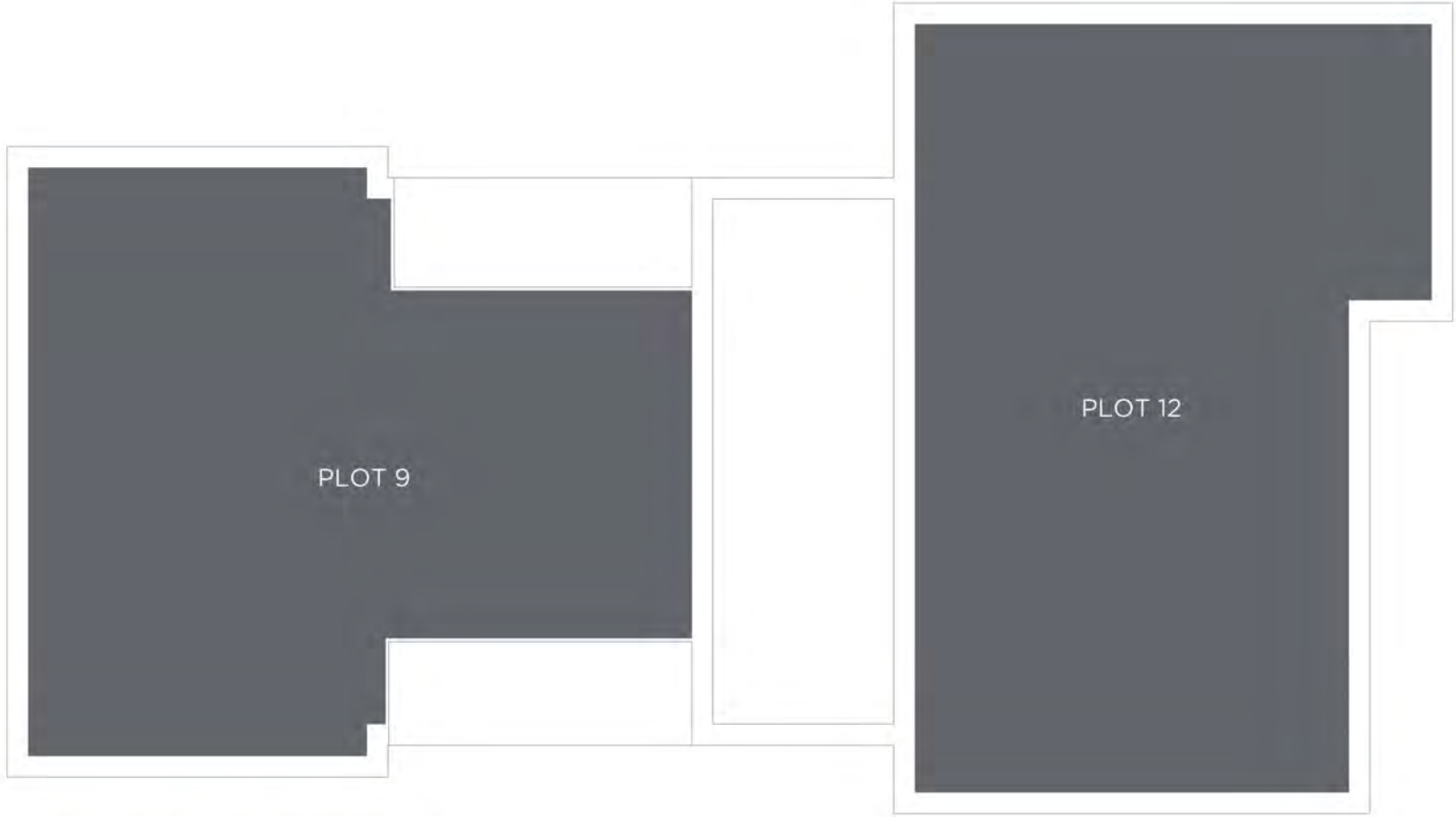
Please note floorplans are not to scale and are indicative only, total areas are provided as gross internal areas and are subject to variance and these plans do not act as part of a legally binding contract, warranty or guarantee. These plans may not be to scale and dimensions may vary during the build programme. It is common for fixtures and fittings to change during the build programme, for example boilers. Location of windows, doors, kitchen units and appliances may differ. Doors may swing in to the opposite direction to that shown on selected houses. Dimensions, which are taken from the indicated points of measurement are for guidance only and are not intended to be used to calculate the space needed for specific pieces of furniture. If your home is set within a terrace row, the position of the windows may vary from those shown on this plan. The property may also be a handed (mirrored) version of the layout shown here. We advise that you do not order any furniture based on these indicative plans, please wait until you can measure up fully, inside the property. Please speak to a member of our sales team about when you can gain access to take measurements. We will not be responsible for costs incurred due to ordering incorrect furniture. VIVID Housing Limited is registered in England and Wales as a registered society under the Co-operative and Community Benefit Societies Act 2014 under number 7544 with exempt charity status and as a registered provider of social housing with the Homes and Communities Agency under number 4850. Our registered office is at Peninsular House, Wharf Road, Portsmouth, Hampshire, PO2 8HB. All information correct at time of creation - April 2024.





# Bramley Park

Plots 9 & 12



## SECOND FLOOR

Please note floorplans are not to scale and are indicative only, total areas are provided as gross internal areas and are subject to variance and these plans do not act as part of a legally binding contract, warranty or guarantee. These plans may not be to scale and dimensions may vary during the build programme. It is common for fixtures and fittings to change during the build programme, for example boilers. Location of windows, doors, kitchen units and appliances may differ. Doors may swing in to the opposite direction to that shown on selected houses. Dimensions, which are taken from the indicated points of measurement are for guidance only and are not intended to be used to calculate the space needed for specific pieces of furniture. If your home is set within a terrace row, the position of the windows may vary from those shown on this plan. The property may also be a handed (mirrored) version of the layout shown here. We advise that you do not order any furniture based on these indicative plans, please wait until you can measure up fully, inside the property. Please speak to a member of our sales team about when you can gain access to take measurements. We will not be responsible for costs incurred due to ordering incorrect furniture. VIVID Housing Limited is registered in England and Wales as a registered society under the Co-operative and Community Benefit Societies Act 2014 under number 7544 with exempt charity status and as a registered provider of social housing with the Homes and Communities Agency under number 4850. Our registered office is at Peninsular House, Wharf Road, Portsmouth, Hampshire, PO2 8HB. All information correct at time of creation - April 2024.



# Bramley Park

## Plots 7 to 12 2 BEDROOM APARTMENTS



BIN STORE  
REAR ELEVATION



CYCLE STORE  
SIDE ELEVATION



FRONT ELEVATION



SIDE ELEVATION

Please note floorplans are not to scale and are indicative only, total areas are provided as gross internal areas and are subject to variance and these plans do not act as part of a legally binding contract, warranty or guarantee. These plans may not be to scale and dimensions may vary during the build programme. It is common for fixtures and fittings to change during the build programme, for example boilers. Location of windows, doors, kitchen units and appliances may differ. Doors may swing in to the opposite direction to that shown on selected houses. Dimensions, which are taken from the indicated points of measurement are for guidance only and are not intended to be used to calculate the space needed for specific pieces of furniture. If your home is set within a terrace row, the position of the windows may vary from those shown on this plan. The property may also be a handed (mirrored) version of the layout shown here. We advise that you do not order any furniture based on these indicative plans, please wait until you can measure up fully, inside the property. Please speak to a member of our sales team about when you can gain access to take measurements. We will not be responsible for costs incurred due to ordering incorrect furniture. VIVID Housing Limited is registered in England and Wales as a registered society under the Co-operative and Community Benefit Societies Act 2014 under number 7544 with exempt charity status and as a registered provider of social housing with the Homes and Communities Agency under number 4850. Our registered office is at Peninsular House, Wharf Road, Portsmouth, Hampshire, PO2 8HB. All information correct at time of creation - April 2024.

VIVID

# Bramley Park



Please note floorplans are not to scale and are indicative only, total areas are provided as gross internal areas and are subject to variance and these plans do not act as part of a legally binding contract, warranty or guarantee. These plans may not be to scale and dimensions may vary during the build programme. It is common for fixtures and fittings to change during the build programme, for example boilers. Location of windows, doors, kitchen units and appliances may differ. Doors may swing in to the opposite direction to that shown on selected houses. Dimensions, which are taken from the indicated points of measurement are for guidance only and are not intended to be used to calculate the space needed for specific pieces of furniture. If your home is set within a terrace row, the position of the windows may vary from those shown on this plan. The property may also be a handed (mirrored) version of the layout shown here. We advise that you do not order any furniture based on these indicative plans, please wait until you can measure up fully, inside the property. Please speak to a member of our sales team about when you can gain access to take measurements. We will not be responsible for costs incurred due to ordering incorrect furniture. VIVID Housing Limited is registered in England and Wales as a registered society under the Co-operative and Community Benefit Societies Act 2014, under number 7544 with exempt charity status and as a registered provider of social housing with the Homes and Communities Agency under number 4850. Our registered office is at Peninsular House, Wharf Road, Portsmouth, Hampshire, PO2 8HB. All information correct at time of creation - April 2024.

VIVID



# Bramley Park



Please note floorplans are not to scale and are indicative only. Total areas are provided as gross internal areas and are subject to variance and these plans do not act as part of a legally binding contract, warranty or guarantee. These plans may not be to scale and dimensions may vary during the build programme. It is common for fixtures and fittings to change during the build programme, for example boilers. Location of windows, doors, kitchen units and appliances may differ. Doors may swing in to the opposite direction to that shown on selected houses. Dimensions, which are taken from the indicated points of measurement are for guidance only and are not intended to be used to calculate the space needed for specific pieces of furniture. If your home is set within a terrace row, the position of the windows may vary from those shown on this plan. The property may also be a handed (mirrored) version of the layout shown here. We advise that you do not order any furniture based on these indicative plans, please wait until you can measure up fully, inside the property. Please speak to a member of our sales team about when you can gain access to take measurements. We will not be responsible for costs incurred due to ordering incorrect furniture. VIVID Housing Limited is registered in England and Wales as a registered society under the Co-operative and Community Benefit Societies Act 2014, under number 7544 with exempt charity status and as a registered provider of social housing with the Homes and Communities Agency under number 4850. Our registered office is at Peninsular House, Wharf Road, Portsmouth, Hampshire, PO2 8HB. All information correct at time of creation - April 2024.

VIVID

# SPECIFICATION

## Kitchen:

- The kitchen supplier is Symphony and from the Woodbury Range (Gloss Finish) with white doors and end panels Handles are Matt Nickel bar handles (HPK 671)
- Kitchen worktop is postformed and PVC edged laminate 'Marble Siroco'

## Bathroom:

- Bathroom features Comfytex Padua 594 vinyl and Porcelanosa Fontana tiles (25 x 44.3cm)

## Other internals:

- Kitchen & living room flooring is Comfytex Olumpus 591 viny
- Flooring in remaining non wet areas is Cormar Apollo Plus 'Meteorite'
- Ceilings and Walls are painted with Delux Supermatt White Emulsion

Images shown are indicative and do not represent the final specification. VIVID reserves the right to change items in the specification dependent on availability, at any moment, and without prior notice during the build completion.



VIVID



# WHO WE ARE

We're a customer-focused provider of affordable homes and the 4th largest builder amongst UK housing associations. We have an ambitious development programme, together with providing vital support services to our communities.

# BUYING MORE SHARES

Shared Ownership enables you to buy more shares in your home over time, from an additional 10% to outright purchase (in most cases). We call this staircasing.

# AFTER YOU MOVE IN

You can have confidence buying a VIVID home as our team are here to help you if you have any unforeseen issues or defects in your new home.





SO HOW CAN YOU ENJOY  
ALL THIS FOR JUST £59,375?\*

# ONLY WITH VIVID SHARED OWNERSHIP

Shared ownership lets you buy a share of your new home. You can start at just 25% with a 5% deposit. You pay rent on the rest. If you buy a 25% share on one of these apartments, you can expect the rent to be around £408.20 per month\*. In the future, as your financial situation changes, you can buy greater shares if you want to. This is called staircasing. As your share goes up, your rent comes down. If you'd like to get a better understanding of how much buying a brand new home at Bramley Park would cost you.

Visit [www.yourvividhome.co.uk](http://www.yourvividhome.co.uk) to see all of our homes on offer with Shared Ownership!

\*Prices are based on buying a 25% share in a 2 bedroom apartment with a FMW of £237,500, shares start from £59,375 with a monthly rent of example of £408.20 (Based on unsold equity at 2.75% of value). Terms and conditions apply.



VIVID

# NOW IT'S TIME TO APPLY

[yourvividhome.co.uk/developments/bramley-park](https://yourvividhome.co.uk/developments/bramley-park)

VIVID

VIVID Housing Limited is registered in England and Wales as a registered society under the Co-operative and Community Benefit Societies Act 2014 under number 7544 with exempt charity status and as a registered provider of social housing with the Homes and Communities Agency under number 4850. Our registered office is at Peninsular House, Wharf Road, Portsmouth, Hampshire, PO2 8HB. All information correct at time of creation – October 2024.



# VIVID @ Bramley Park

Warsash, SO31 9EF

Shared Ownership homes

Property type	Plot	Address	100% value*	Eg: FROM minimum 25% share (which you must raise mortgage & deposit for)	Eg: Initial monthly rent pcm FROM (based on 75% share you don't own)	Estimated Service Charge	Projected handover date*	Lease Length	Council Tax Band	Important Information
2 Bedroom Apartment	9	Flat 5, 6 Seaford Road, Warsash, Southampton, SO31 9EF	£237,500	£59,375	£408.20	£103.69	January 2025	990 Years	TBC	<a href="#">Energy Info</a> <a href="#">Key Info</a>
2 Bedroom Apartment	10	Flat 2, 6 Seaford Road, Warsash, Southampton, SO31 9EF	£237,500	£59,375	£408.20	£103.69	January 2025	990 Years	TBC	<a href="#">Energy Info</a> <a href="#">Key Info</a>
2 Bedroom Apartment	11	Flat 4, 6 Seaford Road, Warsash, Southampton, SO31 9EF	£237,500	£59,375	£408.20	£103.69	January 2025	990 Years	TBC	<a href="#">Energy Info</a> <a href="#">Key Info</a>
2 Bedroom Apartment	12	Flat 6, 6 Seaford Road, Warsash, Southampton, SO31 9EF	£237,500	£59,375	£408.20	£103.69	January 2025	990 Years	TBC	<a href="#">Energy Info</a> <a href="#">Key Info</a>

Please note the following:

- Eligibility conditions apply.





- Applicants with a live/work/family connection to the Fareham Borough Council Local Authority area will have priority
- We may be required to discuss your application with the Local Authority
- Initial Rent is calculated from 2.75%
- The 25% example above shows the **minimum** share available. Applicants will be means tested to confirm the share they purchase and are required to purchase the maximum affordable % .
- Successful applicants will have a maximum of 28 days \*\* to exchange contracts following VIVID's solicitor issuing the contract pack. You must then complete on the purchase within a maximum 5 days of either exchange of contracts or following handover from the developer.

\*Prices & projected handover dates are for guidance only and are subject to change. Our newbuild Shared Ownership homes are valued by a RICS (Royal Institute Chartered Surveyor) surveyor which confirms the full market value for 3 months. Every 3 months we will have the homes revalued, to make sure they're in line with the current market. This means the price is non-negotiable. It also means the value of the homes could go up or down, so are subject to change.

If purchasing a property off-plan Handover dates are only projected and subject to change. Vivid will inform you of any changes to projected handover dates as and when received by the developer. Please note that we are not able to give you detailed information to the reasons for any extended delays due to confidentiality agreements within the contracts between vivid and the developer.

By agreeing to reserve a property off-plan Vivid will not be responsible for any fees that you may incur due to delays in property completions.

\*\* or if all legal paperwork and the mortgage offer is in you must complete the sale.